

Aerospace Test System **KT-6000 „PAUL“**

We developed our standard Aerospace Test System KT-6000 “PAUL” to meet the specific requirements of the aerospace industry.

The system is designed against the backdrop of its usability as a complete system tester, which can be adapted to the respective test requirements of various devices under test (DUT) using different test unit adapters (TUA).

Besides standard ATE functionality, the system supports the integration of test equipment for:

- Acceptance Test Procedures (ATP)
- Highly accelerated life testing (HALT)
- Environmental Stress Screening (ESS)
- High Accelerated Stress Screening (HASS)

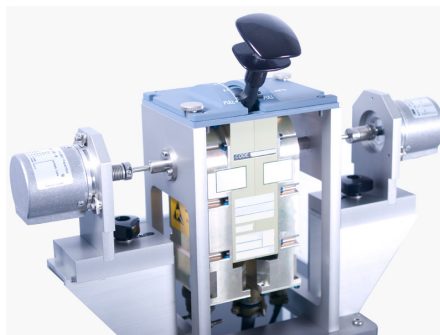


The system is perfectly suited for use as a standard system tester, from validation and verification of prototypes via qualification tests in the development phase through to acceptance testing in production or in the field. Technological support is provided by the use of ABex - Analog Bus Extension for PXI. The COTS principle has been widely implemented, e.g. by using instruments from renowned manufacturers as National Instruments and Agilent.

Konrad Technologies looks back at many years of experience in the design of test systems and offers extensive services from classical maintenance contracts to obsolescence management over many years.

Instrumentation

- Programmable AC and DC sources
- Electronic loads
- Boundary Scan
- Multifunction DAQ boards (minimum 16-bit, 1.25 MS/s)
- 6.5 digit DMM with LCR option
- Digitizer (up to 1GHz)
- Waveform Generators
- Digital I/O
- CAN bus
- Arinc 429
- MIL-STD 1553
- STANAG 3350 Video Analyzer
- Other interfaces depending on requirement



Software

As in the other tester series from Konrad Technologies, the same standard tools are used for the software platform.

The NI TestStand as well as the extensive KT Project test step library are the main elements. Konrad Technologies has developed a product for implementing the comprehensive test descriptions or requirement documents in ready-made test sequences, which largely automates this process.

Based on a previously defined test step template and unified syntax in the test descriptions fully automatically running test sequences are generated within a short time.



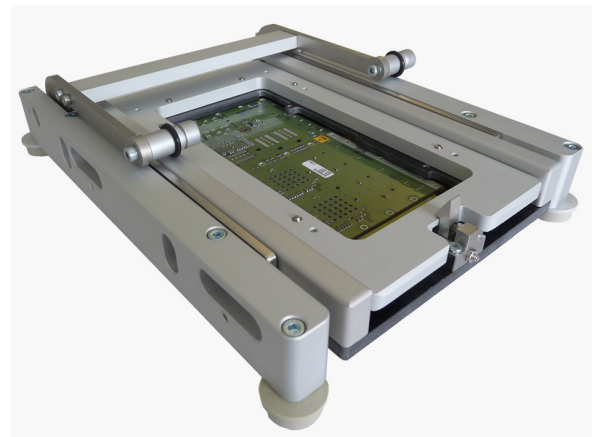
DUT Adaptation

For use in ESS/HASS individual test unit adapters are available with

- Interfaces to climatic chambers
- Communication with shaker systems
- Air-jet hoods

The system offers a long lasting Virginia Panel interface to the respective test adapters (TUA), either the QuadraPaddle commercial product line or a standardized productline according to ARINC 608A.

Typical aerospace data bus interfaces, e.g. Arinc 429 and MIL-STD-1553 are available.



Aerospace Programs

The system has successfully been used in test applications in the following aerospace programs:

- Eurocopter Tiger
- NH90
- EFA Eurofighter
- Panavia Tornado
- Boeing 787
- Airbus A380



konrad
... technologies ...

Additional Informations: www.konrad-technologies.de

Konrad GmbH

Fritz-Reichle-Ring 12 – 78315 Radolfzell – Germany
T: +49 (7732) 9815-0 F: +49 (7732) 9815-104
info@konrad-technologies.de

International Branch Offices: <http://www.konrad-technologies.de>

©2015 Konrad GmbH. All rights reserved. ABex is a trademark of Konrad GmbH. CVI, Measurement Studio, LabVIEW, National Instruments, NI, ni.com, NI-DAQ, NI-DMM, NI-Switch, NI-VISA, TestStand are trademarks of National Instruments. The mark LabWindows is used by National Instruments under a license from Microsoft Corporation. Windows and .net are registered trademarks of Microsoft Corporation in the United States and other countries. Other product and company names listed are trademarks of their respective companies.

